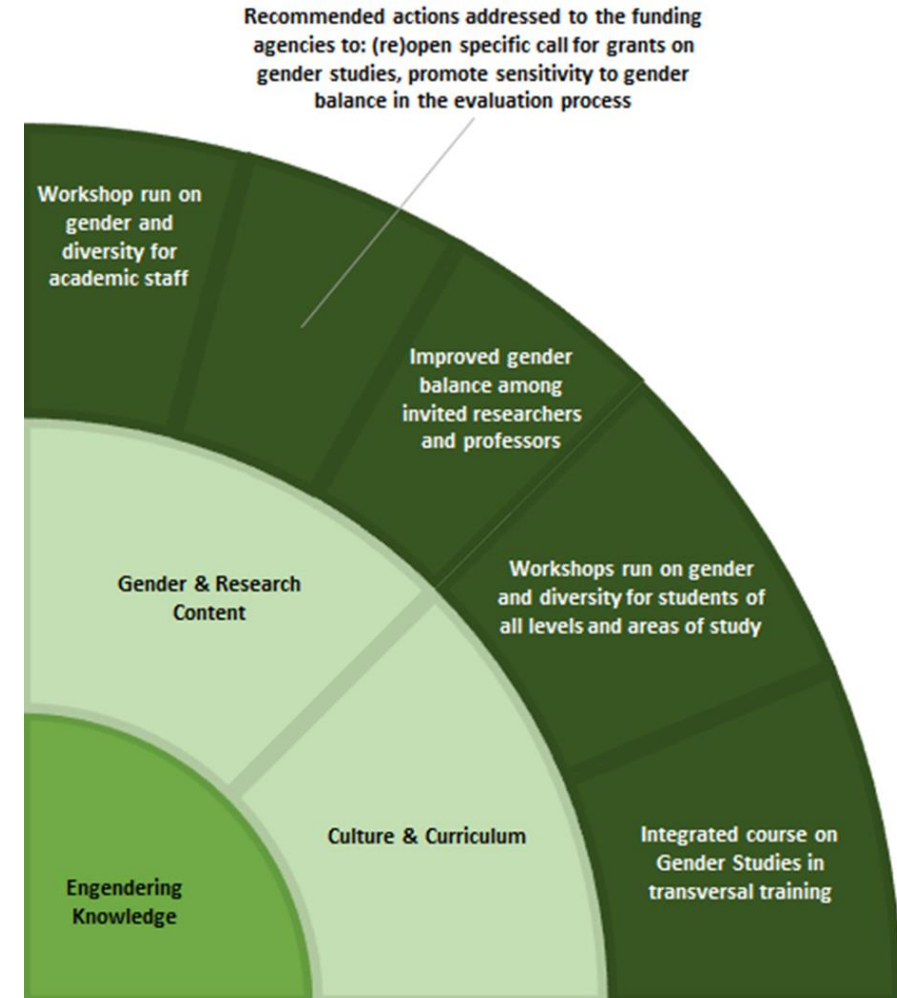


SAGE Quadrant 1: Engendering Knowledge

Each institution has drawn up the Quadrant 1 of the SAGE Wheel showing the local measures which indicate **how each dimension was translated into action**

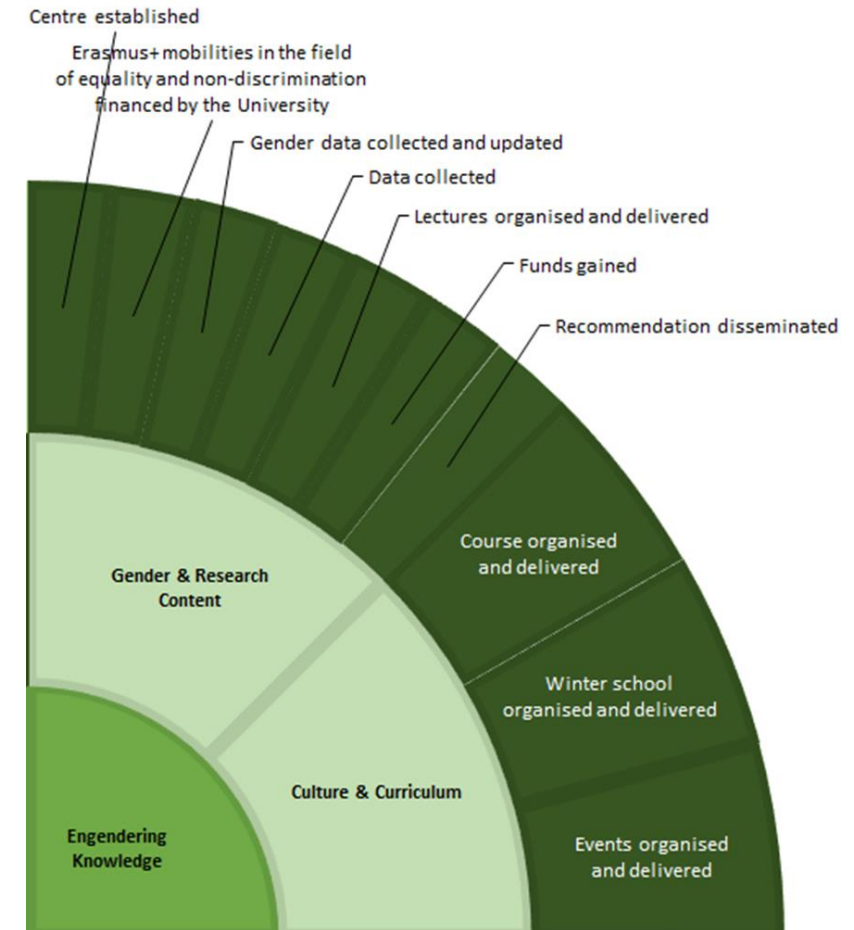
ISCTE-IUL's example

SAGE Quadrant	Dimension	Action planned	Measure of success
Engendering Knowledge	Embedding Gender in Curriculum	Promote Gender and Diversity training for students	Workshops run on gender and diversity for students of all levels and areas of study
		Create a course on Gender Studies open to all students	Integrated course on Gender Studies in transversal training
	Embedding Gender in Research Content	Train academic staff and researchers	Workshop run on gender and diversity for academic staff
		Contribute to national dedicated funding for Gender Studies	Recommended actions addressed to the funding agencies to: (re)open specific call for grants on gender studies, promote sensitivity to gender balance in the evaluation process
		Raise awareness for the gender imbalance amongst invited researchers	Improved gender balance among invited researchers and professors



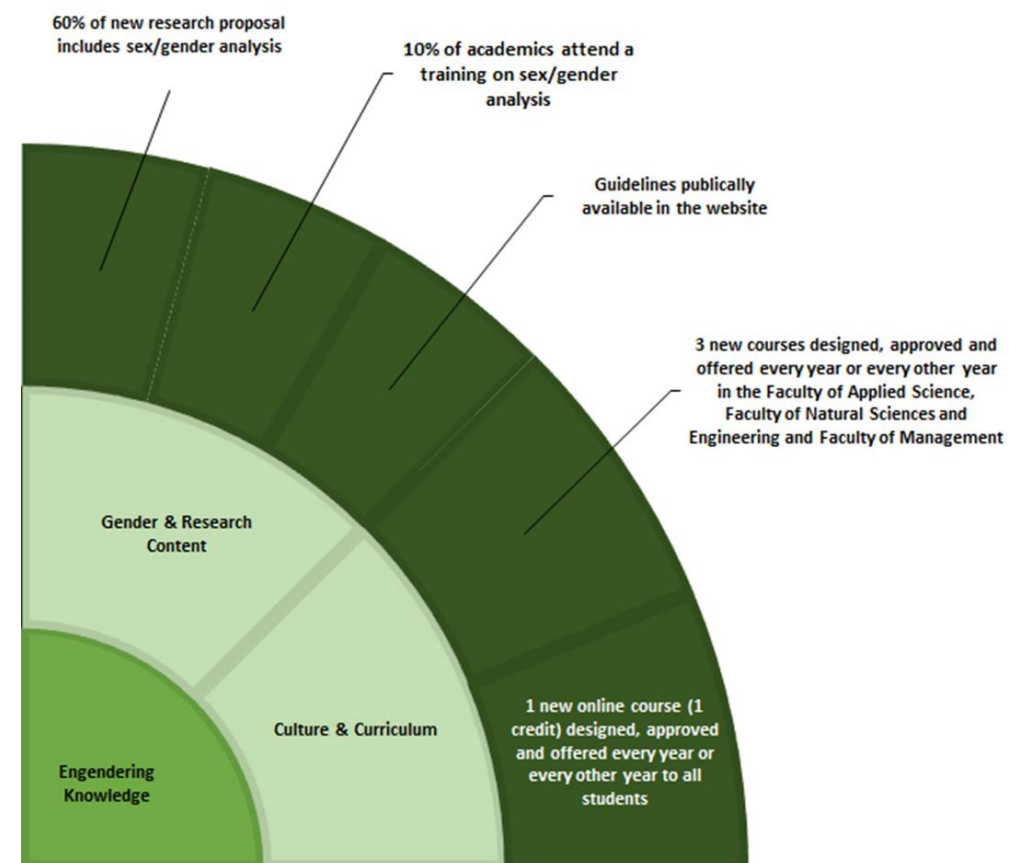
UNIBS's example

SAGE Quadrant	Dimension	Action planned	Measure of success
Engendering Knowledge	Embedding Gender in Curriculum	Organisation of a dedicated 6-ECTS course on equality issues	Course organised and delivered
		Organisation of a winter school on equality issues	Winter school organised and delivered
		Two-hours seminars for students on equality issues	Events organised and delivered
	Embedding Gender in Research Content	Creation of an Interdepartmental Centre on Gender Studies	Centre established
		Enhance collaborative exchanges with other Universities on equality issues through the Erasmus+ programme	Erasmus+ mobilities in the field of equality and non-discrimination financed by the University
		Implementation of a systemic gender data collection (included the recruitment area and the paternity leave)	Gender data collected and updated
		Qualitative data collection on gender biases	Data collected
		Public lectures on gender equality and diversity	Lectures organised and delivered
		Active participation in submitting proposals to external funder on equality issues	Funds gained
		Recommendation to pay attention to gender balance in research teams sent by the Research Office to all personnel	Recommendation disseminated



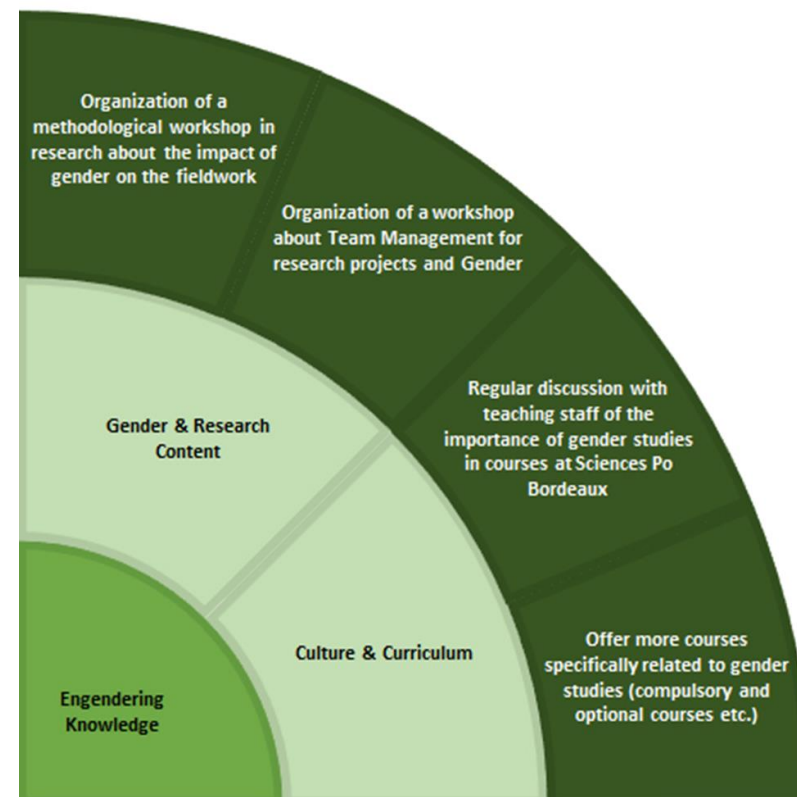
KHAS's example

SAGE Quadrant	Dimension	Action planned	Measure of success
Engendering Knowledge	Embedding Gender in Curriculum	Offer gender courses in faculties where there is none.	3 new courses designed, approved and offered every year or every other year in the Faculty of Applied Science, Faculty of Natural Sciences and Engineering and Faculty of Management.
		Create a required course for all students concerning gender equality.	1 new online course (1 credit) designed, approved and offered every year or every other year to all students.
	Embedding Gender in Research Content	Include in the university's research grants two new criteria as plus factors for funding: <ul style="list-style-type: none"> the integration of sex/gender analysis within research gender balance of teams 	60% of new research proposal includes sex/gender analysis
		Designate 20% of individual research budget for training on sex/gender analysis in carrying out research.	10% of academics attend a training on sex/gender analysis
		Provide academics and researchers with the SAGE Guidelines on integration sex/gender analysis into research.	Guidelines publically available in the website



SCiPo's example

SAGE Quadrant	Dimension	Action planned	Measure of success
Engendering Knowledge	Embedding Gender in Curriculum	Integration of gender knowledge into teaching in all disciplines.	Regular discussion with teaching staff of the importance of gender studies in courses at Sciences Po Bordeaux.
		Gender modules for students	Offer more courses specifically related to gender studies (compulsory and optional courses etc.)
	Embedding Gender in Research Content	Gender Workshops for doctoral students	Organization of a methodological workshop in research about the impact of gender on the fieldwork
		Gender Workshop for researchers	Organization of a workshop about Team Management for research projects and Gender.



IUS's example

- Needs to be implemented
- In process
- Implemented (partially implemented)

SAGE Quadrant	Dimension	Action planned	Measure of success
Engendering Knowledge	Embedding Gender in Curriculum	Integration of gender knowledge into teaching all disciplines by providing at least two weeks teaching chosen discipline with the gendered prospective	All study programs have introduced at least two weeks of gender knowledge in required courses
	Embedding Gender in Research Content	Training on applying to research funding that includes good practice of including gender in all disciplines' research.	Academics aware of importance of gender components across disciplines.

